

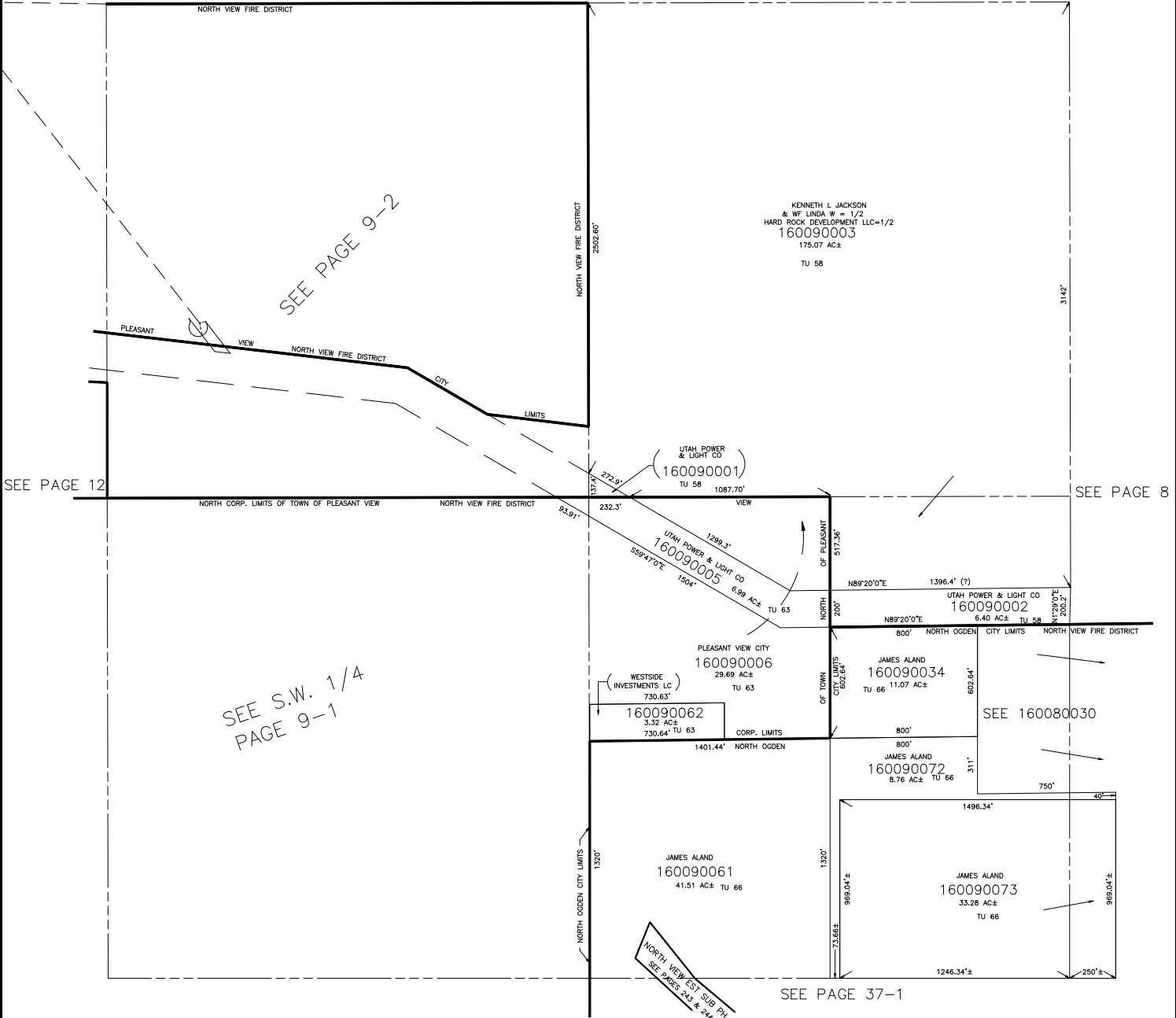
SECTION 17, T.7N., R.1W., S.L.B. & M.

IN WEBER COUNTY AND PLEASANT VIEW CITY

TAXING UNIT: 63, 58, 66

SCALE 1" = 400'

SEE PAGE 4



SEE PAGE 9-2

SEE PAGE 12

SEE PAGE 8

SEE S.W. 1/4
PAGE 9-1

SEE 160080030

NORTH VIEW CITY SUB PH 01
SEE PAGE 243 & 244

SEE PAGE 37-1